



39 Megstone Pimlico Court, Gateshead, NE9 5HG

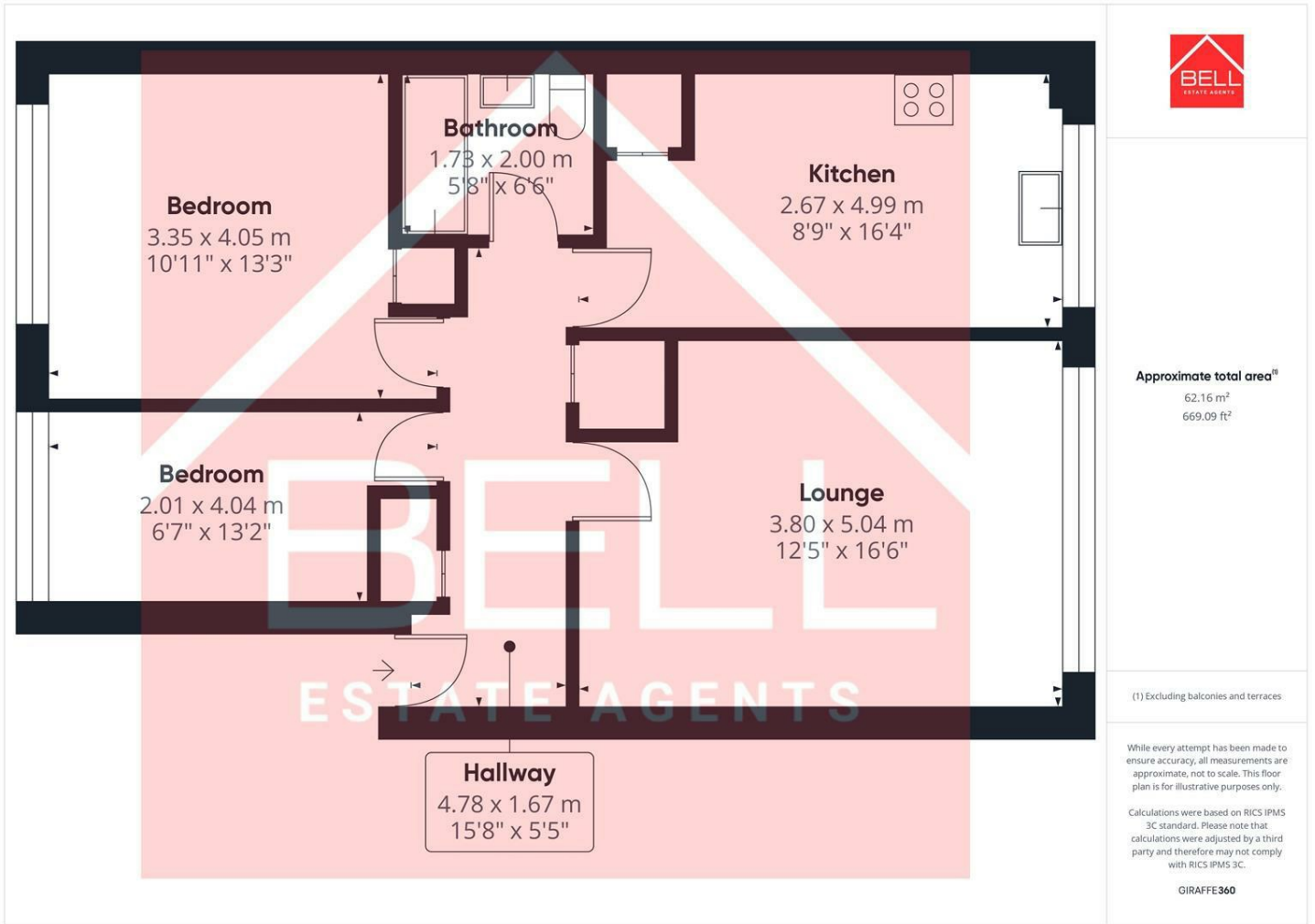
£800 PCM

A modern top floor apartment recently refurbished in 2025 situated in central Low Fell...

Presented to an excellent standard this top floor apartment, has been stylishly developed and offers excellent size accommodation situated in the heart of Low Fell. The internal accommodation briefly comprises of a secure communal entrance with stairs leading up to the top floor. Stepping into the apartment there are two double bedrooms, a welcoming lounge with views, a modern fitted L-shape kitchen and a tiled family bathroom. Parking is unallocated and available within Pimlico Court

Originating in the 16th century Low Fell has quickly developed into one of the more popular of the two dozen or so villages which now comprise the Metropolitan Borough of Gateshead. The Durham Road area has now become a vibrant commercial hub with thriving shops, bars and restaurants as well as some banks and small offices. Whilst also offering its own running and rugby clubs and highly regarded local schools demand for properties increases to grow as more buyers look to move into the area. The area also offers excellent links to the A1, Metrocentre and Team Valley for commuters.

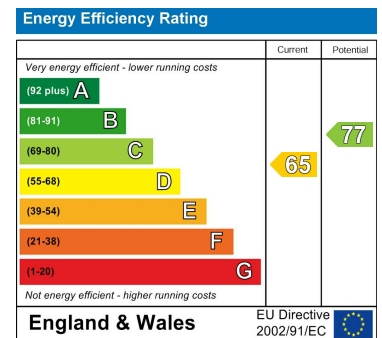
Floor Plan



Area Map



Energy Efficiency Graph



These particulars, whilst believed to be accurate are set out as a general outline only for guidance and do not constitute any part of an offer or contract. Intending purchasers should not rely on them as statements of representation of fact, but must satisfy themselves by inspection or otherwise as to their accuracy. No person in this firm's employment has the authority to make or give any representation or warranty in respect of the property.