



24 Rialto Building, Newcastle, NE1 2JR

£1,200 PCM

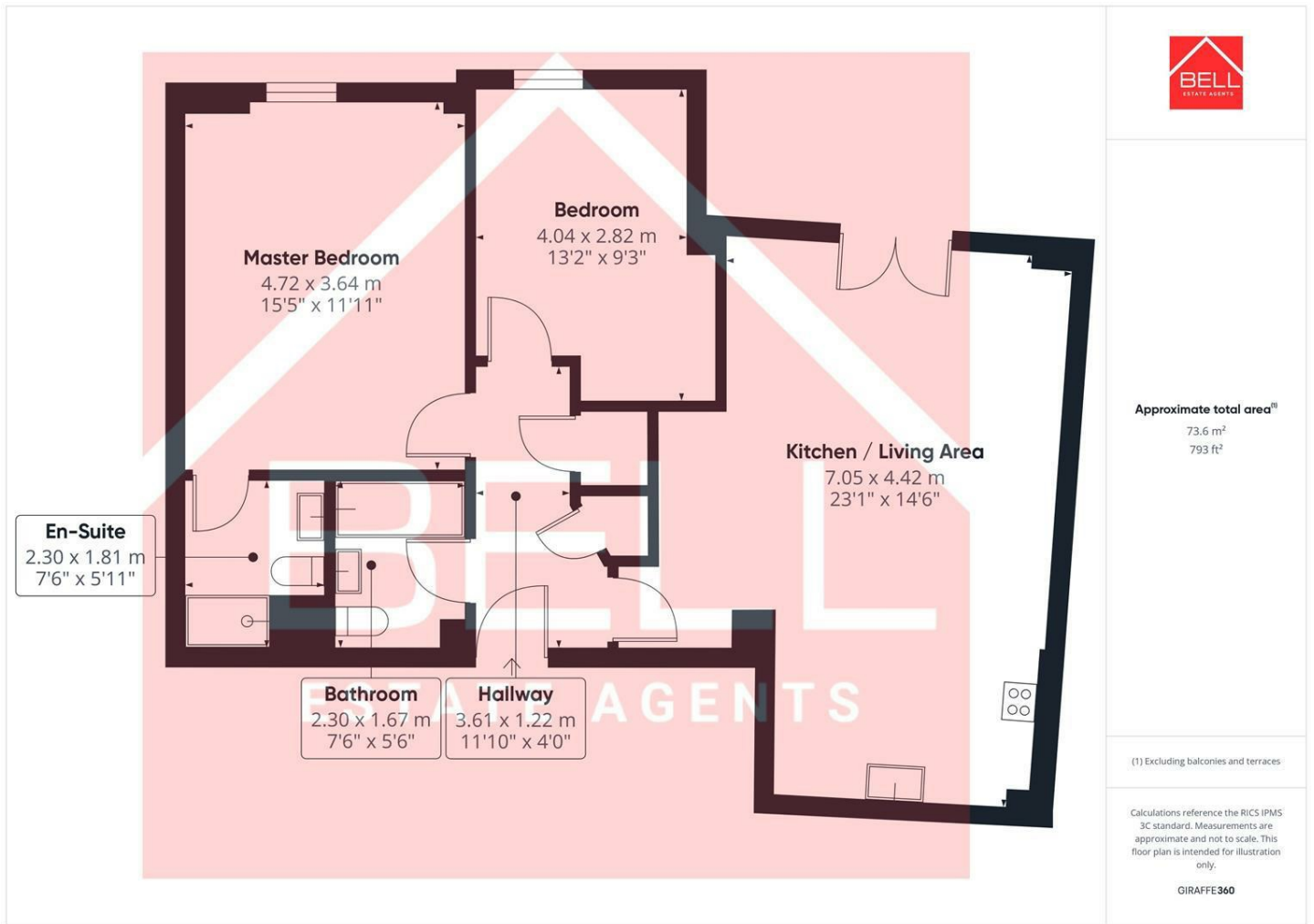
Modern City Living With Space To Breathe – Step Into This Bright & Stylish Two-Bedroom Apartment in the Heart of Newcastle.

Located in the ever-popular Rialto Building, this beautifully presented and generously sized apartment offers the ideal blend of modern comfort, city convenience and contemporary design. With a large open-plan living and kitchen area, two double bedrooms, two stylish bathrooms (including an en-suite), secure parking and clean, neutral décor throughout, this home is perfectly suited for professionals seeking quality accommodation in a prime central location.

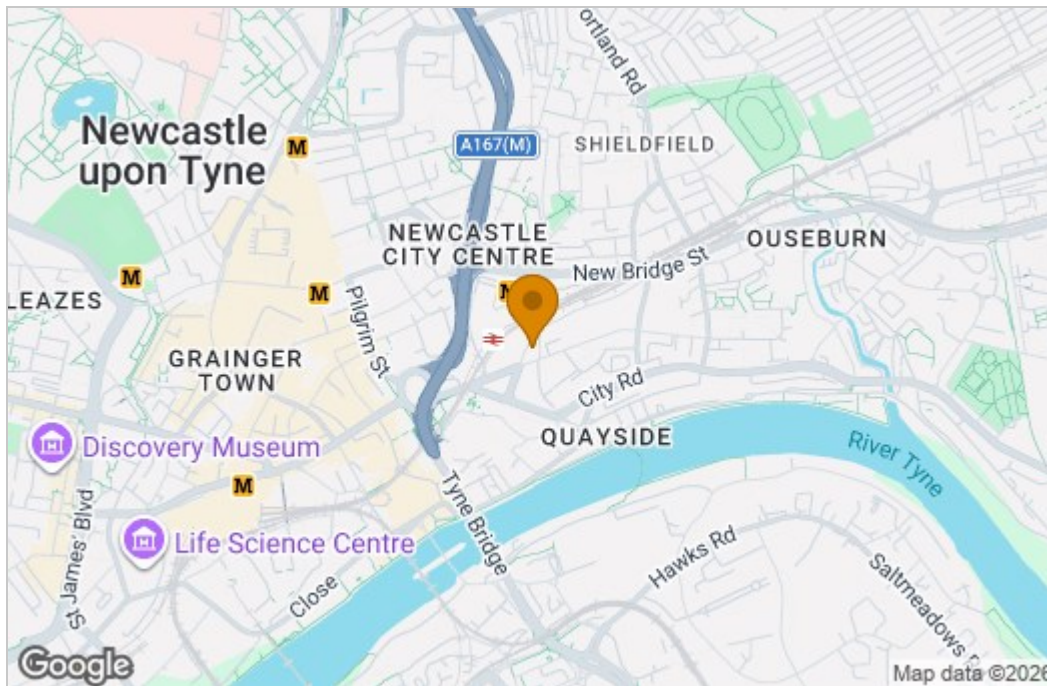
Flooded with natural light, the expansive open-plan lounge creates an inviting social space, complete with Juliet balcony doors that open towards city views. The adjoining kitchen features sleek cabinetry, integrated appliances and ample worktop space, making it ideal for day-to-day living and entertaining. Both bedrooms are well-proportioned, with the master benefiting from its own modern en-suite. The main bathroom and hallway continue the theme of fresh, modern finishes seen throughout the property.

The apartment also includes secure underground parking, lift access and well-maintained communal areas, providing a practical and convenient lifestyle.

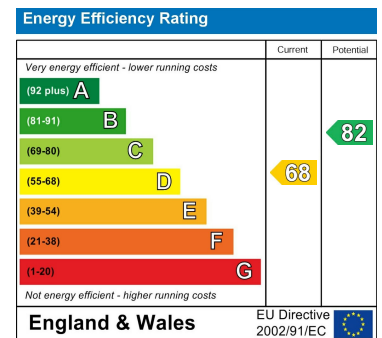
Floor Plan



Area Map



Energy Efficiency Graph



These particulars, whilst believed to be accurate are set out as a general outline only for guidance and do not constitute any part of an offer or contract. Intending purchasers should not rely on them as statements of representation of fact, but must satisfy themselves by inspection or otherwise as to their accuracy. No person in this firm's employment has the authority to make or give any representation or warranty in respect of the property.