



12 Oxen Close, Wallsend, NE28 9FT

Offers Over £229,950

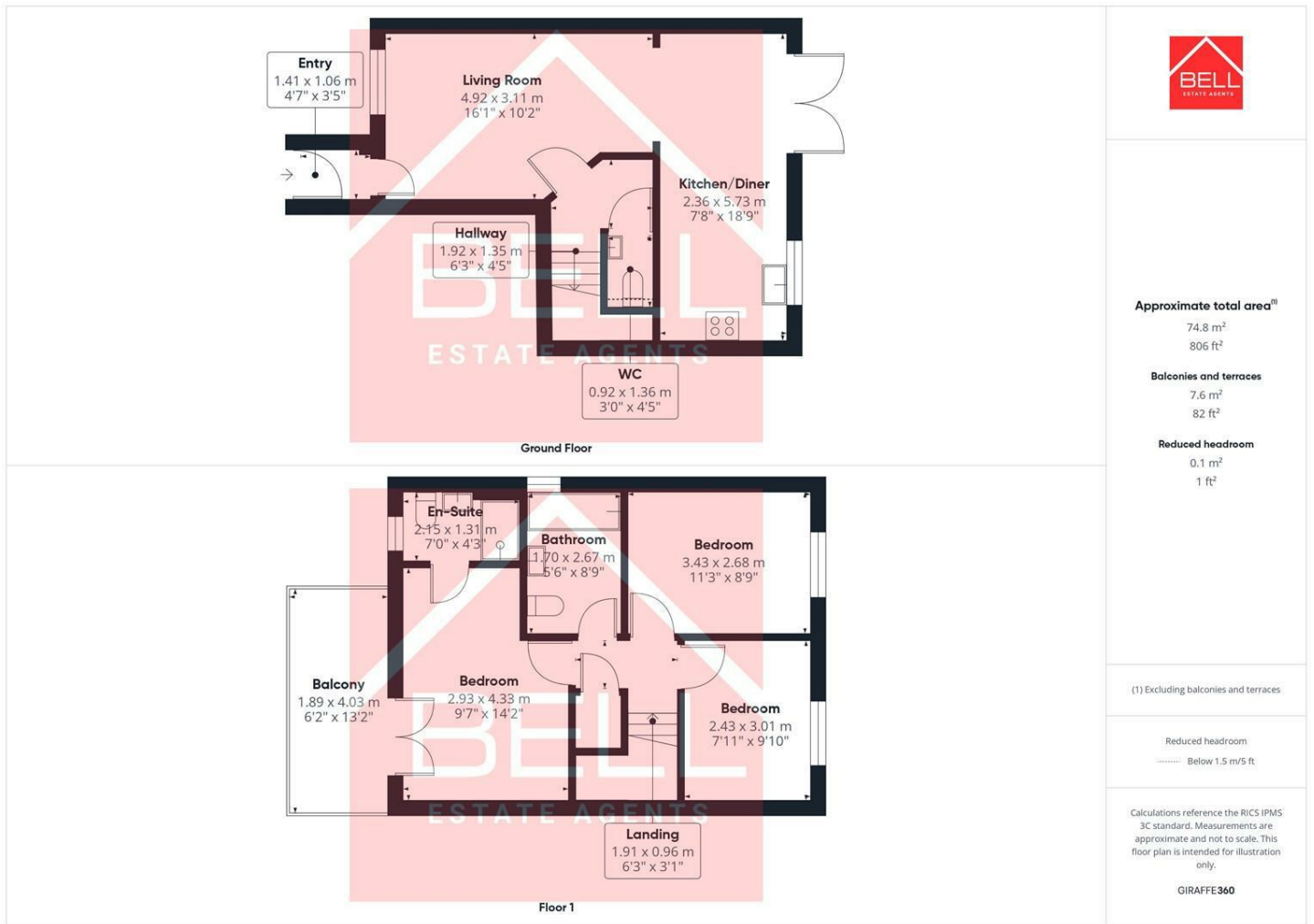
Modern Three-Bedroom Home with Balcony Views Over Rising Sun Country Park.

Beautifully presented and positioned within the highly sought-after East Benton Rise development, this modern three-bedroom end-terrace home offers stylish accommodation, excellent outdoor space and stunning open views to the front.

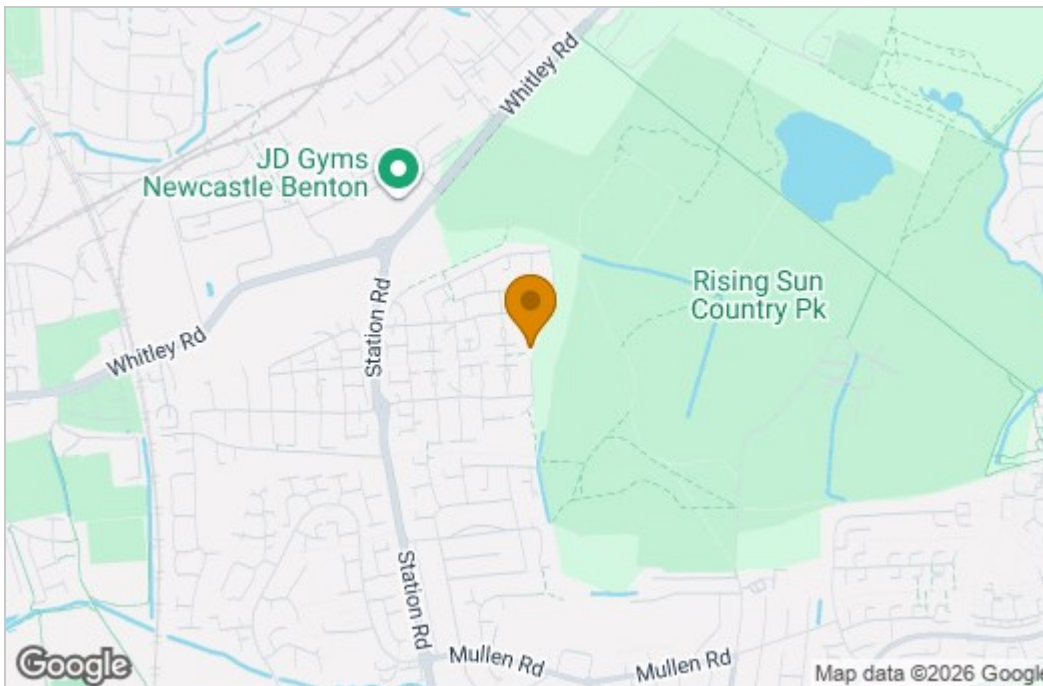
A standout feature of the property is the principal bedroom, which benefits from a private en-suite shower room and direct access onto a balcony overlooking Rising Sun Country Park. This peaceful outlook provides an impressive setting for both morning coffee and evening relaxation.

The ground floor offers a bright and spacious lounge, finished with contemporary décor and tiled flooring, with access to the integral garage located adjacent to the lounge. To the rear is a modern kitchen/diner fitted with a range of sleek units and selected integrated appliances. Patio doors open directly onto the landscaped rear garden, creating an ideal space for entertaining and everyday family living. A convenient ground floor WC completes this level.

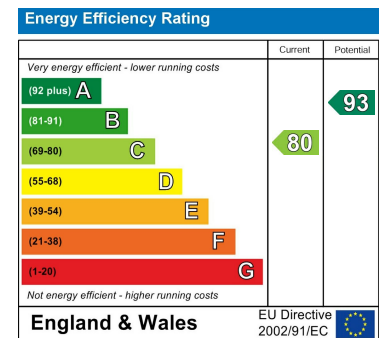
Floor Plan



Area Map



Energy Efficiency Graph



These particulars, whilst believed to be accurate are set out as a general outline only for guidance and do not constitute any part of an offer or contract. Intending purchasers should not rely on them as statements of representation of fact, but must satisfy themselves by inspection or otherwise as to their accuracy. No person in this firm's employment has the authority to make or give any representation or warranty in respect of the property.